

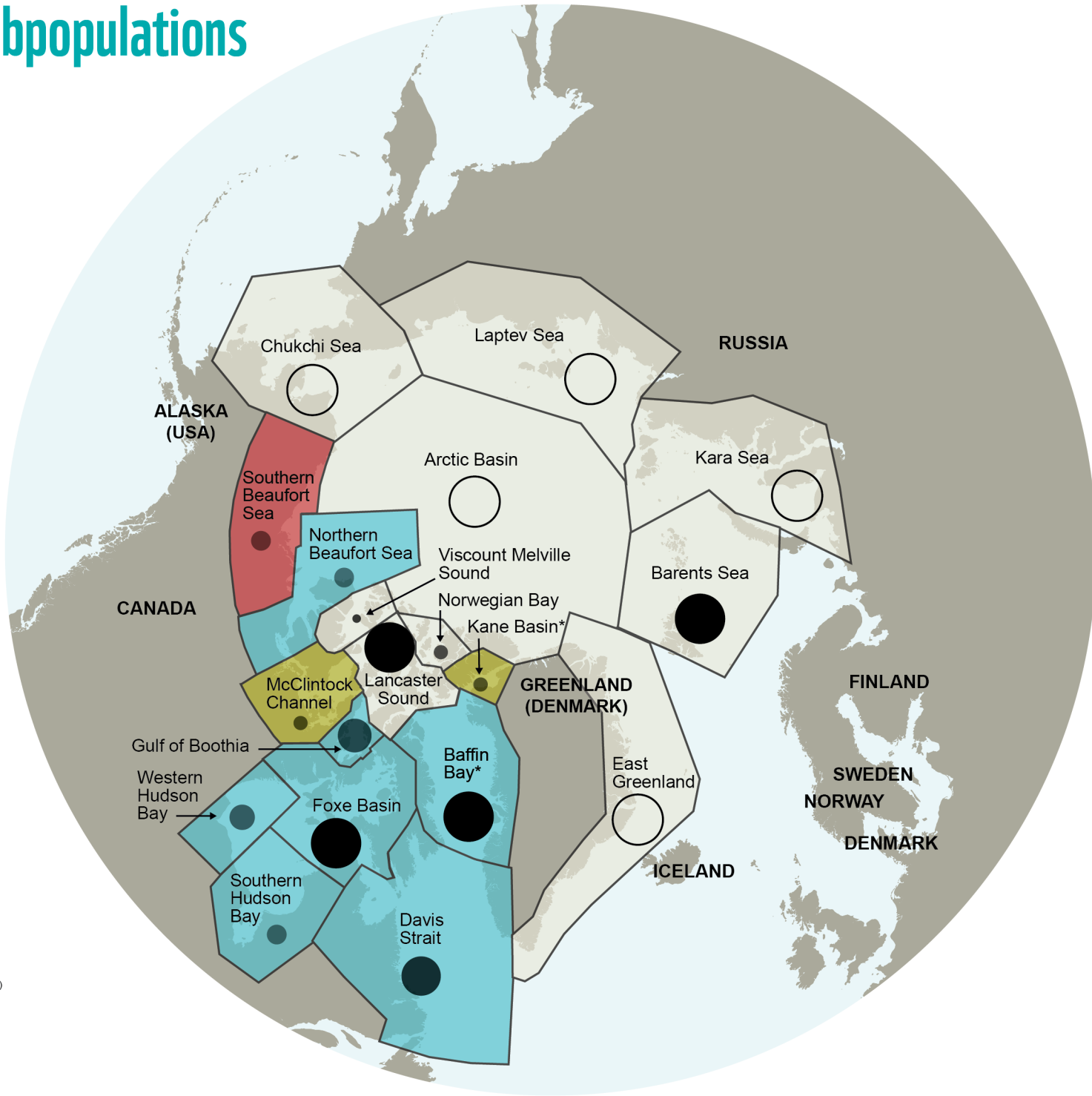
Trends in Polar Bear Subpopulations

SUBPOPULATION SIZE (Number of bears)

- < 200
- 200-500
- 500-1000
- 1000-1500
- 1500-2000
- 2000-2500
- 2500-3000
- Unknown

POPULATION TREND (2017)

- Stable
- Increasing
- Declining
- Data deficient



Produced by WWF Canada, June 2017.
 Sources: IUCN/Polar Bear Specialist Group, June 2017 (*Population trends not yet officially designated by PBSG)
 Range Boundaries IUCN 2012
 Projection: North Pole Sterographic.
 © 1986 Panda symbol WWF-World Wide Fund for Nature (also known as the World Wildlife Fund)
 © "WWF" is a WWF Registered Trademark